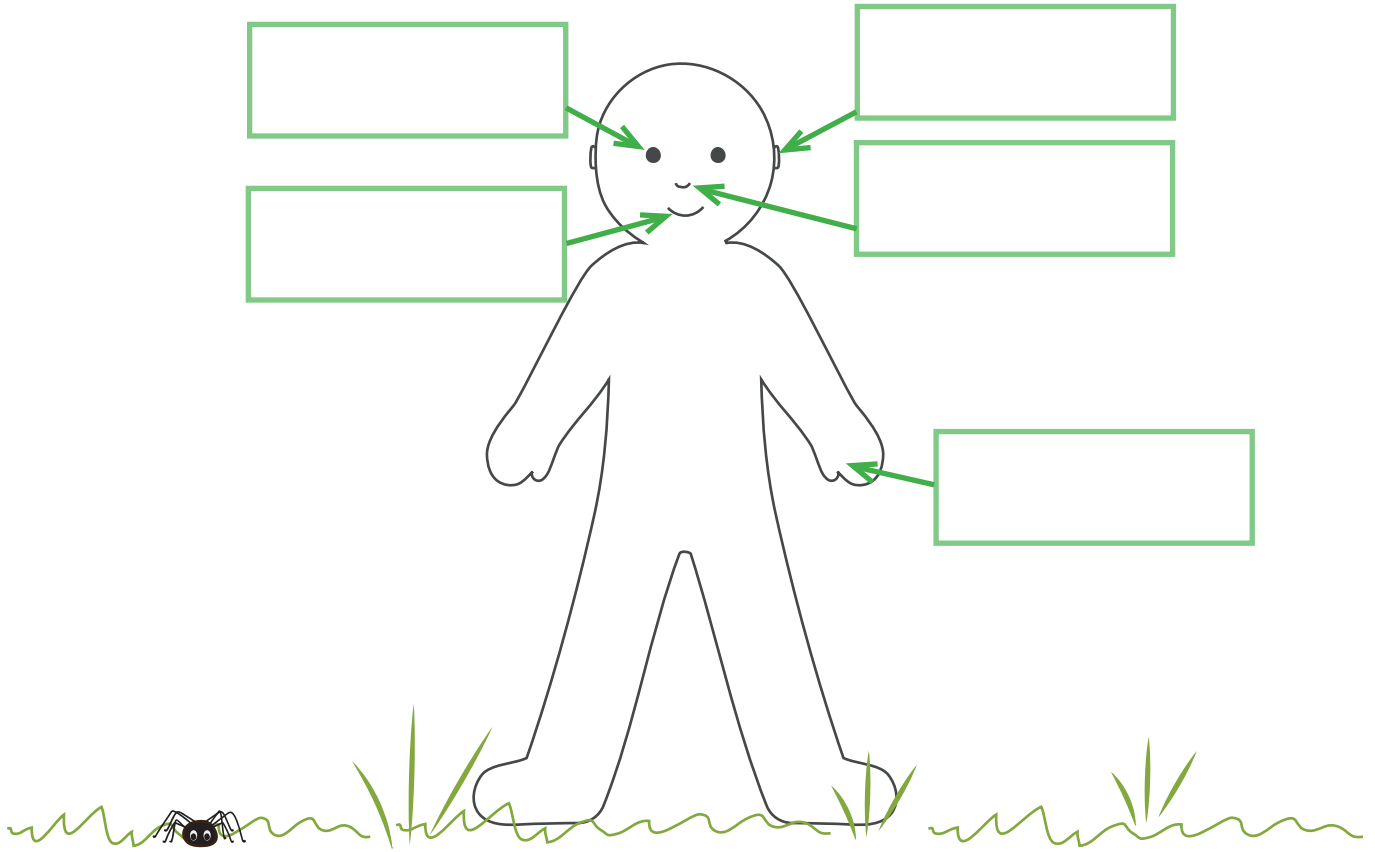




Outdoor Activity Sheet. Spring 2020.
Science. KS1. Activity 1.

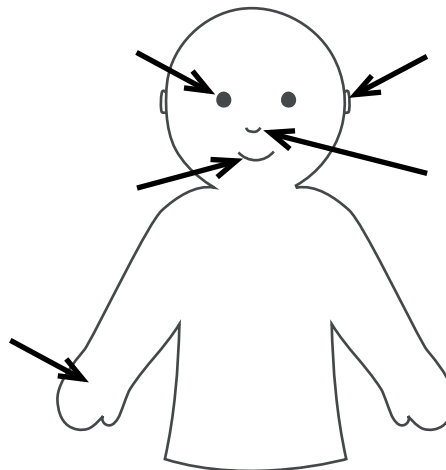
On the diagram below label the following body parts:

EYES NOSE MOUTH EARS SKIN



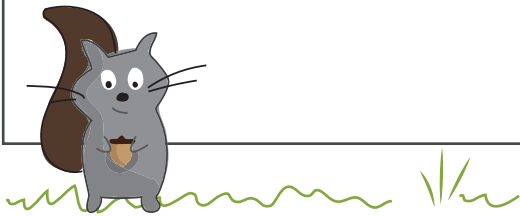
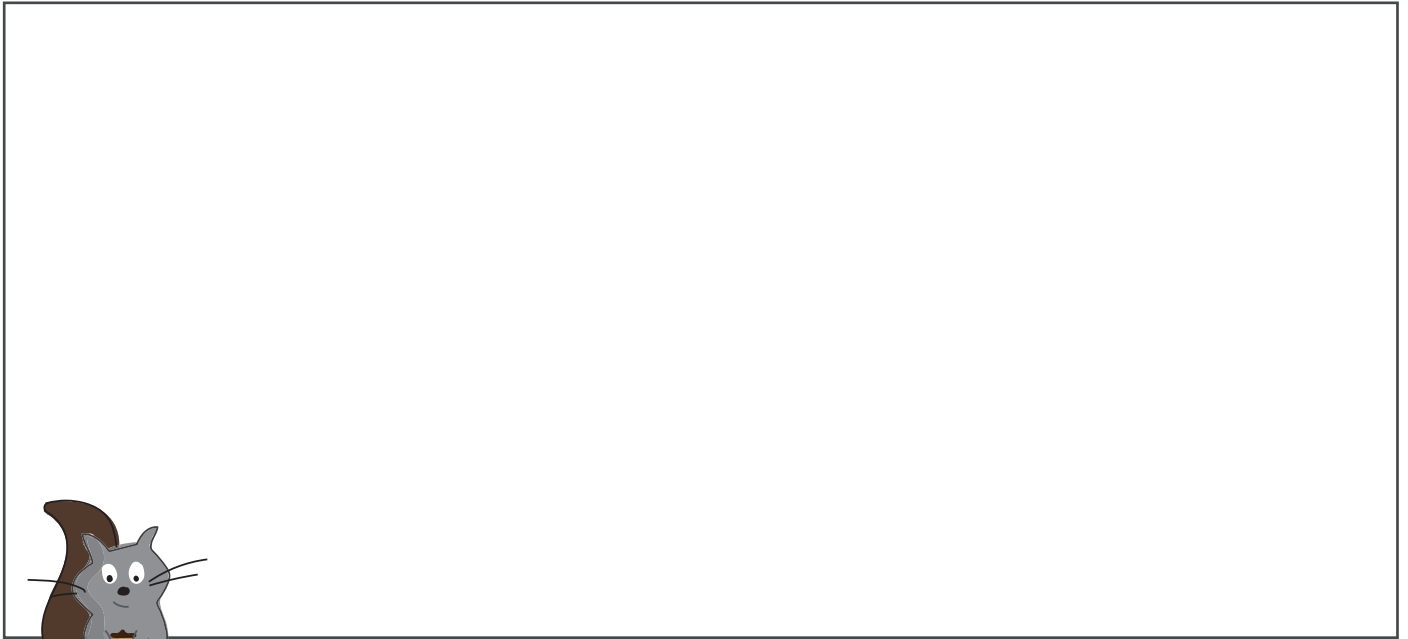
Then connect the senses to the body parts:

- Taste ●
- See ●
- Touch ●
- Smell ●
- Hear ●



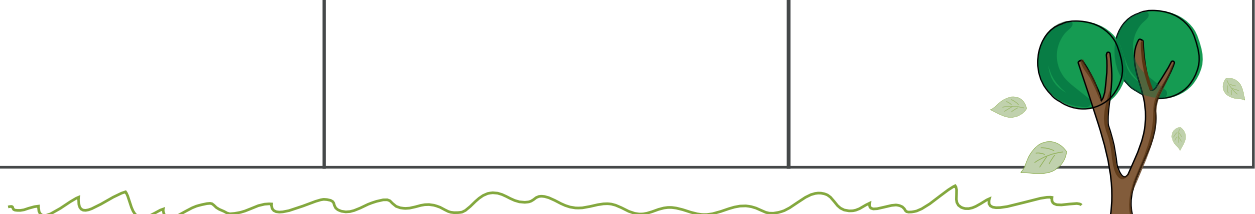
Find a spot near a tree, bush or flower bed. Spend 5 minutes sitting quietly and watching carefully.

Write what wildlife you can spot?



Whilst sitting here identify:

What you can hear?	What you can see?	What you can smell?

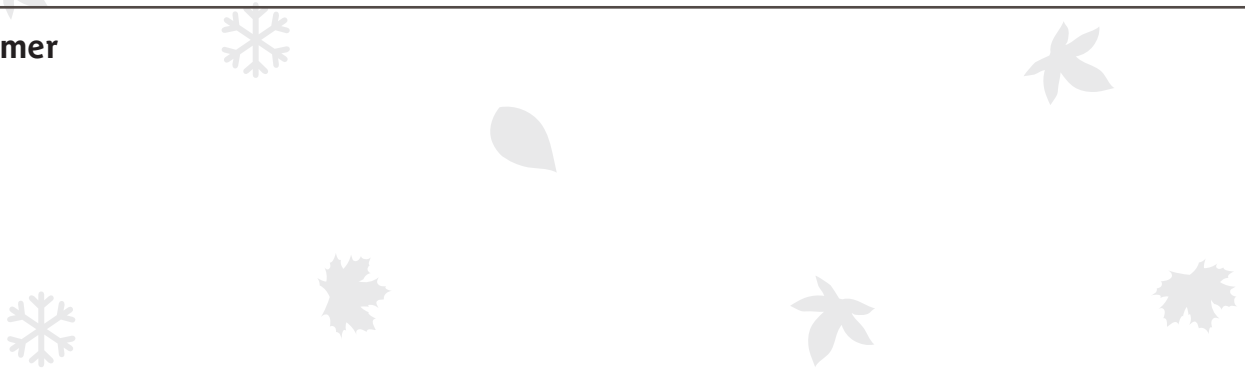


What might be different in...

Spring



Summer



Autumn



Winter



Come back during each season and see if your predictions were correct!

