

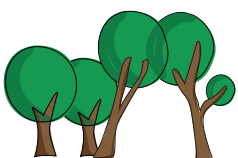
A cartoon illustration of a grey squirrel with a large brown bushy tail, holding a brown nut in its paws. The squirrel has large white eyes and a small black nose. The background is a solid yellow color.

The yellow letter in each of the answers can then be used to find out the secret phrase. (Clue: it is something which can make us all happy!)

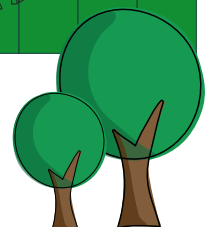
According to the information outside the Playhouse Theatre, what leisure facility used to be inside?

[illegible][illegible]

A horizontal grid consisting of 10 equal-sized rectangular cells. The first cell on the left is filled with a solid yellow color. The next three cells are empty and white. The remaining seven cells are filled with a solid green color and contain various types of leaves and foliage. The leaves include several green leaves, some brown leaves, and some smaller, more delicate green leaves.

[illegible][illegible][illegible][illegible]

www.go-outside.co.uk



Can you travel around the Town Centre and find the answers to the questions below?

The yellow letter in each of the answers can then be used to find out the secret phrase.
(Clue: it is something which can make us all happy!)

Tag us on facebook or instagram @gooutsideuk when you have found out the answer!

February Scavenger Hunt

Answers




According to the information outside the Playhouse Theatre, what leisure facility used to be inside?

s	w	i	m	m	i	n	g		p	o	o	l
---	---	---	---	---	---	---	---	--	---	---	---	---

The foundation stone of Cheltenham Town Hall was laid in commemoration of the coronation of who?

k	i	n	g		e	d	w	a	r	d		
---	---	---	---	--	---	---	---	---	---	---	--	--



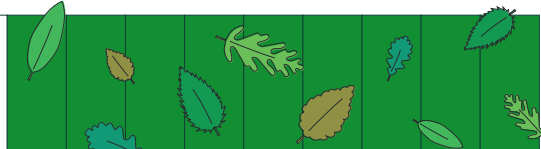
The first of what sort of establishment is commemorated in a green plaque by the roundabout joining St James' Square and Jessop Avenue?

s	c	h	o	o	l							
---	---	---	---	---	---	--	--	--	--	--	--	--



What animal sits next to the minotaur on the Promenade?

h	a	r	e									
---	---	---	---	--	--	--	--	--	--	--	--	--



Who sits in a shell chariot drawn by four seahorses on the Promenade?

n	e	p	t	u	n	e						
---	---	---	---	---	---	---	--	--	--	--	--	--



How many semi-circles are include in the sculpture above Wagamama's?

t	w	e	n	t	y		t	w	o			
---	---	---	---	---	---	--	---	---	---	--	--	--



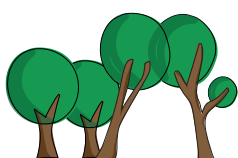
How many ears of wheat are depicted in the sculpture near the entrance of Hollywood Bowl in the Brewery?

t	h	r	e	e								
---	---	---	---	---	--	--	--	--	--	--	--	--



In the mosaics found in alleyway between Tesco Express and New Look (on the high street) what animal is shown running rampage through Cheltenham?

e	l	e	p	h	a	n	t					
---	---	---	---	---	---	---	---	--	--	--	--	--

Enjoy this activity? Visit our website for more trails and to be the first to hear news about our new app!

www.go-outside.co.uk

